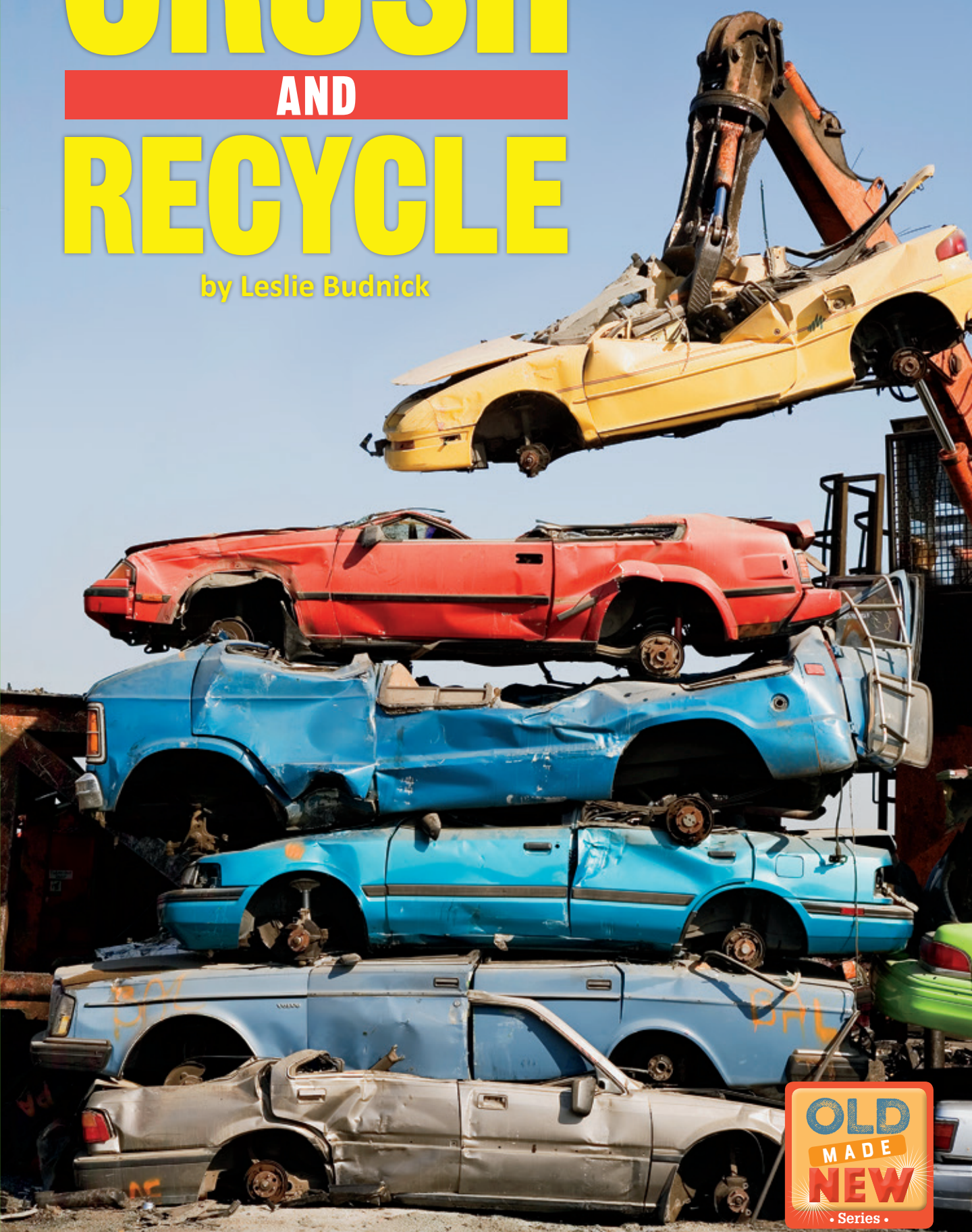


CRUSH AND RECYCLE

by Leslie Budnick



<p>Text Elements</p> <p>Genre: Expository</p> <p>Text Structures</p> <p>Main: Problem/Solution</p> <p>Embedded: Description, Temporal Sequence, Cause/Effect</p> <p>Text Features: table of contents, headings, photos, illustrations, captions, sidebar, diagram, labels, glossary</p>

Crush and Recycle

Author: Leslie Budnick

Heinemann

361 Hanover Street
Portsmouth, NH 03801-3912
www.heinemann.com

Offices and agents throughout the world

Fountas & Pinnell Classroom™
Copyright © 2019 by Irene C. Fountas and Gay Su Pinnell

All rights reserved. No portion of this book may be reproduced in any form or by any electronic or mechanical means, including information storage and retrieval systems, without permission in writing from the publisher. Requests for permission should be mailed to the Permissions Department at Heinemann, 361 Hanover Street, Portsmouth, NH 03801-3912.

ISBN-13: 978-0-325-07336-1

Design and Production by Dinardo Design LLC

Credits

Illustrations: pp. 2, 5, 10, 12, 14, 15 Rob Schuster

Photographs: cover © Car Culture/Getty Images; pp. 1, 16 GraphicStock.com; p. 2 © Jani Bryson/Getty Images; p. 3 © fotolinchen/Getty Images; p. 4 © Joel Sartore/Getty Images; p. 5 (top) © Hemeroskopion/Dreamstime; p. 5 (bottom) © Davo Blair/Alamy; pp. 6–7 © 123 RF; p. 7 © martin vantricht/Getty Images; p. 8 (inset) © PhotoStock-Israel/Alamy; pp. 8–9 © stamerio/Getty Images; p. 10 © Mark Williamson/Getty Images; pp. 10–11 © Scott Ramsey/Alamy; p. 11 (top) © Bogdan Kopania/Getty Images; p. 11 (bottom) © Jupiterimages/Photolibrary/Getty Images; p. 12 © Prisma Bildagentur AG/Alamy; p. 13 (top) Adam Minter; p. 13 (bottom) © JG Photography/Alamy; p. 14 © Iriana Shiyan/Shutterstock.

Printed in China

CRUSH AND RECYCLE

by Leslie Budnick

Table of Contents

Cars That Don't Run 2

Taking Cars Apart 5

Car Crusher 10

Melting Down Cars 12

Recycled Cars Help 14

Glossary 16



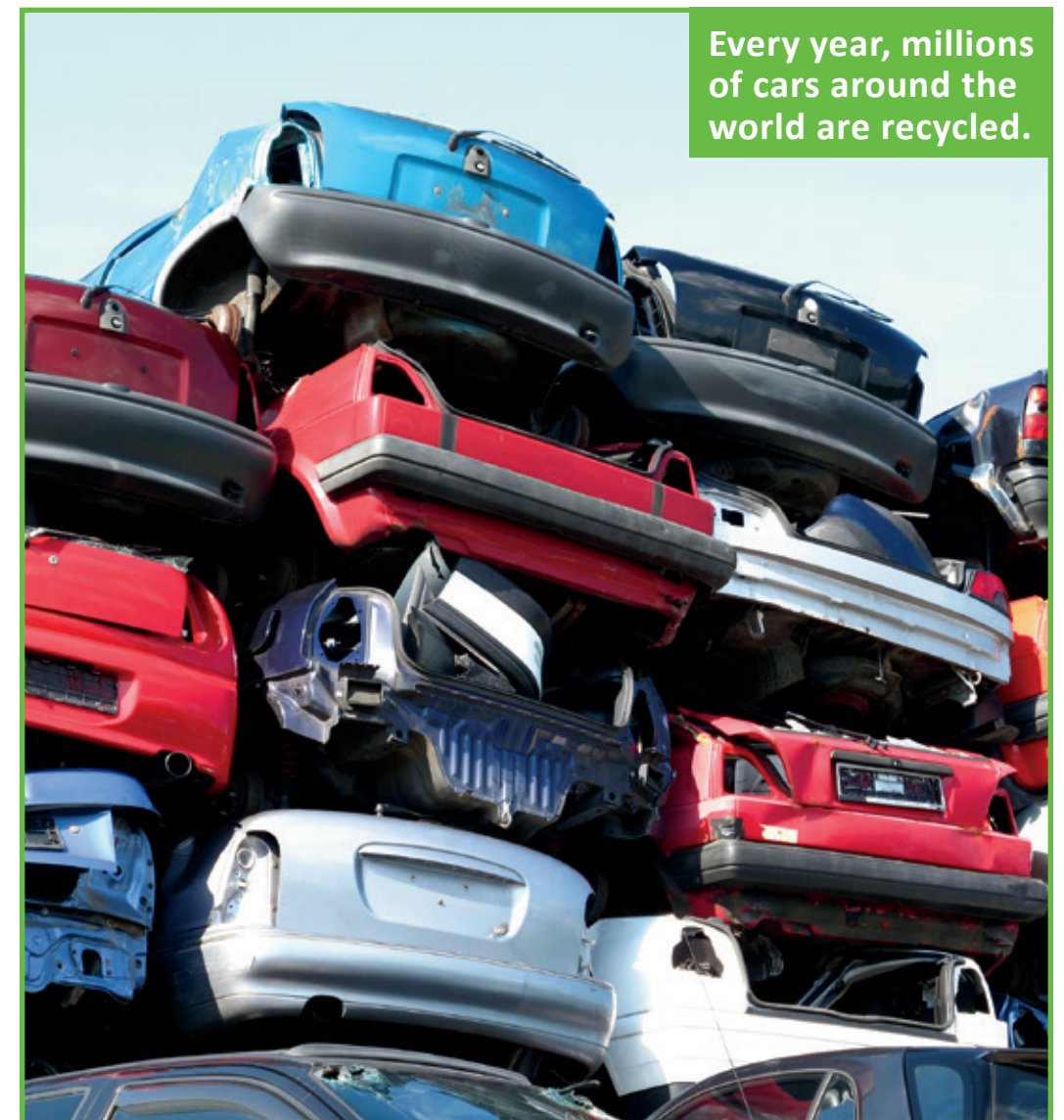
Cars That Don't Run

Every year, millions of cars die. They stop running and they can't be fixed. But cars can be **recycled** just like plastic bottles, glass jars, metal cans, and paper. And some car parts can be **reused**.



Recycling means using old things to make new things instead of throwing them away in the garbage. For example, the glass in an old **windshield** can be used to make a bathroom sink. Think about this the next time you wash your hands. Your sink might have once been the window of a fancy sports car.

To *reuse* means to use something again. A broken car door can be cleaned, fixed, and reused on a different car.



Every year, millions of cars around the world are recycled.

Recycling is good for our planet. It stops garbage from piling up in **landfills**. A landfill is a place where huge piles of garbage and trash are covered with dirt.

Recycling also cuts down on **pollution**. That way fewer harmful things are added to the air, water, and dirt.



Taking Cars Apart

Here is how a car is recycled. First, oil and other **liquids** are drained out of the car. Some of these liquids will be recycled. Some will be cleaned and reused.



Next, the **battery** is taken out. A car battery gives the car the energy it needs to start. The metal and plastic parts inside the battery are removed and melted down. They will be used to make new batteries.





Then, all the parts of the car that still work are taken off. The hood, the lid of the trunk, the steering wheel, the doors, the seats, the windshield, the mirrors, the tires, the wheels, and parts of the engine can all be reused. They can be sold as **spare parts**.



Car parts can be reused in other ways too. Old tires can be painted and used in playgrounds.



Other old tires can be recycled to make the soft mats that cover the hard ground at playgrounds.



soft mat

painted
tires



Car Crusher

You might be wondering what happens to the metal frame of the car. The whole frame goes into a car crusher. The car crusher crushes cars into flat packages of metal.

Here's what happens. A **crane** places a car in the car crusher. Then the car is crushed like an empty can. It takes less than a minute to crush each car.

The crushed, flat cars are placed in huge piles. Then they are put on trucks to carry them to a recycling **plant** where they will be melted down.

First, a crane picks up the car.



Next, the crusher begins crushing the car.



Then, the crushed, flat cars are placed in a huge pile.



And last, the cars are placed on a truck.





Melting Down Cars

At the recycling plant, the crushed cars are put through a machine that chops them into bits the size of oranges.

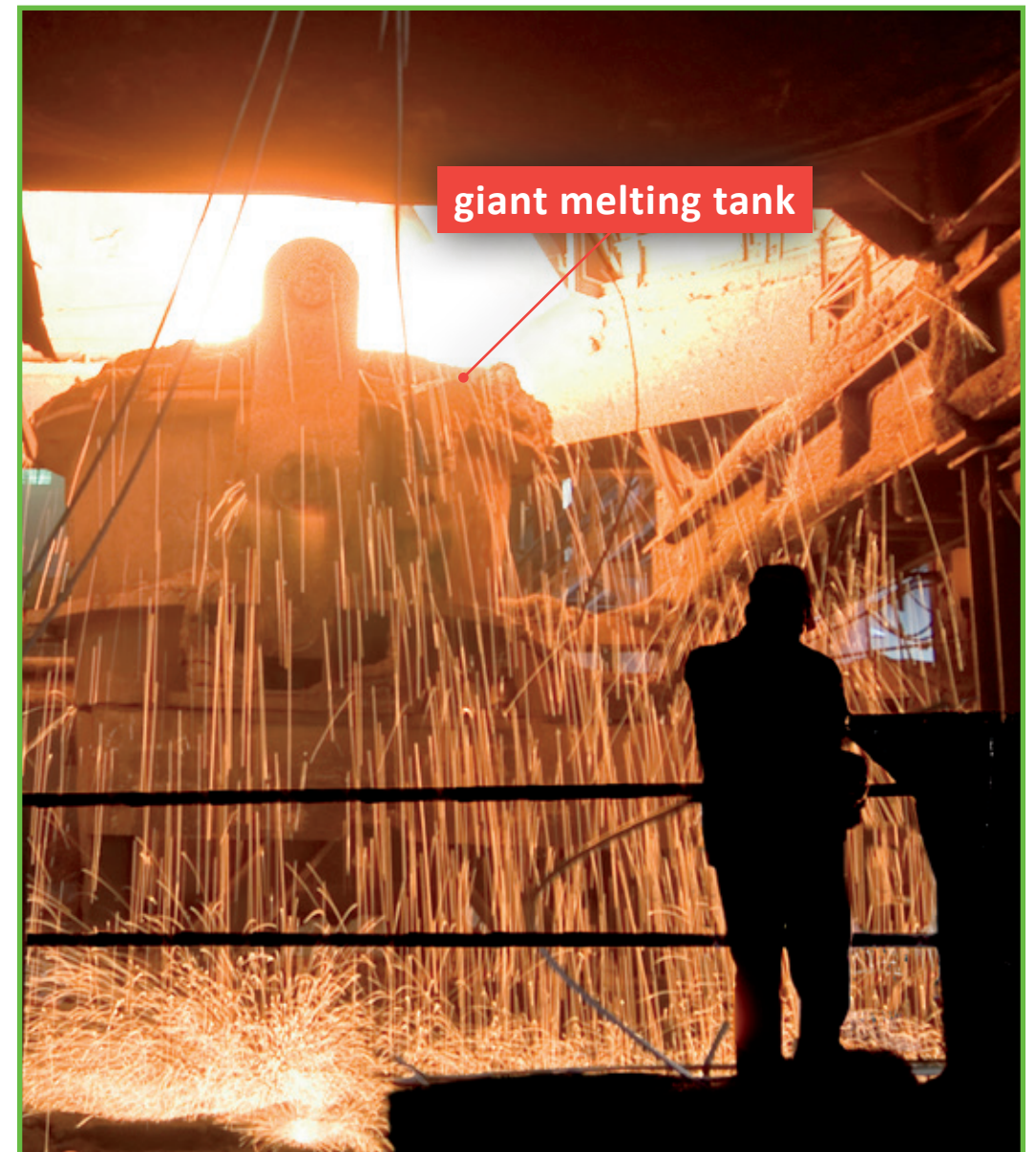


Those bits are sorted into metals, plastics, and **fluff**. Fluff is anything left that can't be recycled.

Most of the metals will be recycled. They will be melted down in giant tanks. Then they will be used to make new metals.

Did You Know?

Workers help sort the metals, plastic, and fluff by hand.





Recycled Cars Help

The new metals from recycled cars will be used to make things such as stoves, ovens, cars, buildings, and much more.



Reusing old car parts, crushing cars, and recycling metals and plastic from cars help keep our planet healthy.



Glossary

battery a container that makes and stores electricity

crane a large machine with a long arm that lifts and moves heavy things

fluff something that cannot be recycled

landfill a place where garbage is piled and then covered with dirt

liquid something that flows freely like water; not a solid or a gas

plant the buildings and equipment used to make a product; a factory

pollution harmful things in the air, water, or dirt

recycle to turn garbage into something new

reuse to use something again

spare part a piece that can replace something that is broken or missing

windshield the window at the front of a car or truck

A Note from the Author

My nine-year-old daughter is in a building block club. Each year the club is given a topic to research before they build for their competition. This year the topic was Waste Wise. The club members had to choose a piece of trash and find out what happens to it when it is thrown away. My daughter chose cars. She and her teammates were so excited to learn about car recycling that I thought other kids would be too. So I wrote this book.

—*Leslie Budnick*



Something Old, Something New

What happens to a car
that doesn't run anymore?
It's recycled in a
car-crushing adventure!

GR

Nonfiction: Expository

525 Total Running Words

Level M

Heinemann
DEDICATED TO TEACHERS™

ISBN: 978-0-325-07336-1



9 780325 073361